

1

**Carbide Tool Holders**

Position of cutter is parallel to shank. This simplifies grinding cutter to correct rake & clearance.

**SERIES** ST: Straight LT: Left RT: Right.

Heat treated & hardened.

Supplied without tool bits, allen key / wrench provided.

Cat. No.	Cat. No.	Cat. No.	Holder Size	Tool Bit Size	Height From Bottom Shank To Cutter Point
Straight	Left	Right	Inch	Inch	Inch
TTH-2011	TTH-2021	TTH-2031	3/8 x 15/16 x 6	1/4	11/16
TTH-2012	TTH-2022	TTH-2032	1/2 x 1-1/4 x 7	5/16	7/8
TTH-2014	TTH-2023	TTH-2033	5/8 x 1-1/2 x 8	3/8	1
TTH-2015	TTH-2024	TTH-2034	3/4 x 1-3/4 x 9	7/16	1-1/8
TTH-2016	TTH-2025	TTH-2035	7/8 x 1-7/8 x 10	1/2	1-1/4
TTH-2017	TTH-2026	TTH-2036	1 x 2-1/8 x 12	5/8	1-3/8
TTH-2018	TTH-2027	TTH-2037	1-1/4 x 2-1/4 x 13	3/4	1-1/2

2

**Turning Tool Holder – American Pattern**

Accurately machined & ground finished in black mottle, heat treated & hardened.

Cutter bit hole assures proper seating of tool bits which reduces breakage.

Supplied without tool bits, allen key / wrench provided.

**SERIES** ST: Straight LT: Left RT: Right.

Cat. No.	Cat. No.	Cat. No.	Holder Size		Tool Bit Size
Straight	Left	Right	Inch	mm	Inch
TTH-2041	TTH-2051	TTH-2061	5/16 x 1/2 x 4	8 x 12.5 x 101	1/8
TTH-2042	TTH-2052	TTH-2062	5/16 x 3/4 x 4-1/2	8 x 19 x 114	3/16
TTH-2043	TTH-2053	TTH-2063	3/8 x 7/8 x 5	9.5 x 22 x 127	1/4
TTH-2044	TTH-2054	TTH-2064	1/2 x 1-1/8 x 6	12.5 x 28 x 152	5/16
TTH-2045	TTH-2055	TTH-2065	5/8 x 1-3/8 x 7	16 x 35 x 178	3/8
TTH-2046	TTH-2056	TTH-2066	3/4 x 1-5/8 x 8	19 x 41 x 203	7/16
TTH-2047	TTH-2057	TTH-2067	7/8 x 1-3/4 x 9	22 x 44 x 228	1/2



1



2

### 3 **Turning Tool Holder – English Pattern**

Accurately machined & ground finished in black mottle, heat treated & hardened.

Suitable for use on English type & European lathes.

**SERIES** ST: Straight LT: Left RT: Right.

Cutter bit hole assures proper seating of tool bits which reduces breakage.

Supplied without tool bits, allen key / wrench provided.

Cat. No.	Cat. No.	Cat. No.	Holder Size		Tool Bit Size
Straight	Left	Right	Inch	mm	Inch
TTH-2071	TTH-2081	TTH-2091	1/2 x 9/16 x 4-1/2	12.5 x 14 x 114	1/8
TTH-2072	TTH-2082	TTH-2092	1/2 x 5/8 x 5	12.5 x 16 x 127	3/16
TTH-2073	TTH-2083	TTH-2093	5/8 x 3/4 x 6	16 x 19 x 152	1/4
TTH-2074	TTH-2084	TTH-2094	3/4 x 7/8 x 7	19 x 22 x 178	5/16
TTH-2075	TTH-2085	TTH-2095	7/8 x 1 x 8	22 x 25 x 203	3/8
TTH-2076	TTH-2086	TTH-2096	1 x 1-1/8 x 9	25 x 28 x 228	7/16
TTH-2077	TTH-2087	TTH-2097	1-1/8 x 1-1/4 x 10	28 x 31 x 254	1/2

### 4 **Cut Off Tool Holders – J & S Type**

Machined to precise tolerances, ground finished in black mottle.

Supports the blade over a wide area which reduces the chance of blade breakage, carefully heat treated.

**SERIES** ST: Straight LT: Left RT: Right.

Supplied without tool bits, allen key / wrench provided.

Cat. No.	Cat. No.	Cat. No.	Holder Size		Tool Bit Size	
Straight	Left	Right	Inch	mm	Inch	mm
TTH-2111	TTH-2121	TTH-2131	5/16 x 9/16 x 3-1/2	8 x 14 x 89	1/16 x 5/16	1.5 x 8
TTH-2112	TTH-2122	TTH-2132	5/16 x 3/4 x 4-1/2	8 x 19 x 114	3/32 x 1/2	2.3 x 12.5
TTH-2114	TTH-2123	TTH-2133	3/8 x 7/8 x 5	9.5 x 22 x 127	3/32 x 5/8	2.3 x 16
TTH-2115	TTH-2124	TTH-2134	1/2 x 1-1/8 x 6	12.5 x 29 x 152	1/8 x 3/4	3.2 x 19
TTH-2116	TTH-2125	TTH-2135	5/8 x 1-3/8 x 7	16 x 35 x 178	1/8 x 7/8	3.2 x 22
TTH-2117	TTH-2126	TTH-2136	3/4 x 1-5/8 x 8	19 x 41 x 203	3/16 x 1	4.5 x 25.4
TTH-2118	TTH-2127	TTH-2137	7/8 x 1-3/4 x 9	22 x 44 x 228	3/16 x 1-1/8	4.5 x 29
TTH-2119	TTH-2128	TTH-2138	1 x 2 x 10	25 x 50 x 250	1/4 x 1-1/4	6.4 x 32
TTH-2120	TTH-2129	TTH-2139	1-1/4 x 2-1/4 x 11	32 x 56 x 280	1/4 x 1-3/8	6.4 x 35



3



4

**5 Parting Tool Holder – Eclipse Type**

Precision machined & ground finished in black mottle.

Suitable for use on English type & European lathes.

**SERIES** ST: Straight LT: Left RT: Right.

Supplied without tool bits.

Allen key / Wrench provided.

Cat. No.	Cat. No.	Cat. No.	Holder Size		Tool Bit Size
Straight	Left	Right	Inch	mm	Inch
TTH-2141	TTH-2144	TTH-2147	1/2 x 1-1/8 x 6	12 x 28 x 150	1/2 x 5/8 width
TTH-2142	TTH-2145	TTH-2148	5/8 x 1-3/8 x 7	16 x 35 x 175	3/4 x 7/8 width
TTH-2143	TTH-2146	TTH-2149	3/4 x 1-3/4 x 7-1/2	19 x 45 x 190	1 x 1-1/8 width

**6 Indexable Carbide Turning Tool Holder**

Versatility of cutting in any direction.

Positive rake cutting & built in chip breaker groove.

Supplied without inserts.

Cat. No.	Shank Size	Description
	Inch	
TTH-2151	3/8	5 PC Set
TTH-2152	1/2	5 PC Set
TTH-2153	5/8	5 PC Set
TTH-2154	3/4	5 PC Set
TTH-2155	1	5 PC Set



5



6



### Turning Tool Holder – Adjustable

Accurately machined & ground finished in black mottle, heat treated & hardened.

**SERIES** ST: Straight LT: Left RT: Right.

Supplied without tool bits, allen key / wrench provided.

Cat. No.	Cat. No.	Cat. No.	Overall Length		Tool Bit Size	
Straight	Left	Right	Inch	mm	Inch	mm
TTH-2157	TTH-2167	TTH-2177	5	127	3/16 to 1/4	4.5 to 6.4
TTH-2158	TTH-2168	TTH-2178	5-1/2	140	1/4 to 5/16	6.4 to 8
TTH-2159	TTH-2169	TTH-2179	6	152	5/16 to 3/8	8 to 9.5
TTH-2160	TTH-2170	TTH-2180	8	203	3/8 to 1/2	9.5 to 12.5



### Quick Clamp Parting Tool Holder

Single piece construction with 100% clamping power.

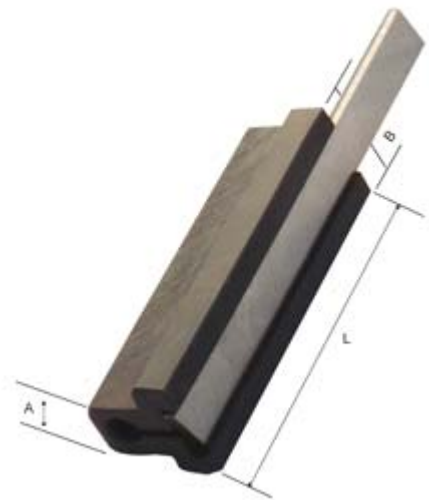
Holds & guides the bevelled blade in a way that it assures equal clearance on both sides.

It can be used both on front & rear tool post of the cross line. Supplied without blade.

Cat. No.	Shank ( A ) x Width ( B ) x Length ( L )		Blade Size	
	Inch	mm	Inch	mm
QCP-2234	1/2 x 7/8 x 2-9/16	12.5 x 22 x 64	3/32 x 1/2 x 4	2.3 x 12.5 x 100
QCP-2235	1/2 x 7/8 x 2-9/16	12.5 x 22 x 64	3/32 x 5/8 x 4	2.3 x 16 x 100
QCP-2236	3/4 x 1-1/8 x 3-3/8	19 x 29 x 85	1/8 x 3/4 x 5	3.2 x 19 x 125



7



8

9

**Knurling Tool Holders**

Manufactured from high quality steel. Accurately machined & ground in black mottle finish.

Separately designed for English & American type lathes, supplied complete with H.S. knurls.

Knurling tool holders with Single Knurls are supplied in straight or diamond pitch in fine, medium or coarse.

Knurling tool holders with Two Knurls are supplied in left & right pitch in fine, medium or coarse.

Holders with Six Knurls are fitted with three pairs of knurls (one right & one left), in fine, medium & coarse pitches.

Cat. No.	Description	No. Of Knurls	Size Of Holder		Knurl Dimensions ( Dia. x Thickness x Hole )	
			Inch	mm	Inch	mm
KTH-1015	Revolving Head	6	1 x 1 x 6-1/2	25 x 25 x 165	3/4 x 3/8 x 1/4	19 x 9.5 x 6.4
KTH-1017	Pivot Head	2	1/2 x 1/2 x 4-1/2	12 x 12 x 112	3/4 x 3/8 x 1/4	19 x 9.5 x 6.4
KTH-1019	Single Knurl	1	1/2 x 1/2 x 4	12 x 12 x 100	3/4 x 1/4 x 1/4	19 x 6.4 x 6.4
KTH-1020	Single Knurl	1	3/4 x 3/4 x 5	19 x 19 x 125	3/4 x 3/8 x 1/4	19 x 9.5 x 6.4
KTH-1027	Revolving Head	6	1/2 x 7/8 x 6-1/2	12 x 22 x 165	5/8 x 3/16 x 1/4	16 x 4.5 x 6.4
KTH-1112	Revolving Head	6	5/16 x 3/4 x 5	8 x 19 x 125	5/8 x 5/16 x 7/32	16 x 8 x 5.5
KTH-1113	Revolving Head	6	3/8 x 7/8 x 5-1/2	9.5 x 22 x 138	5/8 x 5/16 x 7/32	16 x 8 x 5.5
KTH-1114	Revolving Head	6	1/2 x 1-1/8 x 6-1/2	12 x 29 x 165	3/4 x 3/8 x 1/4	19 x 9.5 x 6.4
KTH-1115	Revolving Head	6	5/8 x 1-3/8 x 7-1/2	16 x 35 x 190	3/4 x 3/8 x 1/4	19 x 9.5 x 6.4
KTH-1755	Self Adj. Head	2	5/16 x 3/4 x 5	8 x 19 x 125	5/8 x 5/16 x 7/32	16 x 8 x 5.5
KTH-1756	Self Adj. Head	2	3/8 x 7/8 x 5-1/2	9.5 x 22 x 138	5/8 x 5/16 x 7/32	16 x 8 x 5.5
KTH-1757	Self Adj. Head	2	1/2 x 1-1/8 x 6-1/2	12 x 29 x 165	3/4 x 3/8 x 1/4	19 x 9.5 x 6.4
KTH-1758	Self Adj. Head	2	5/8 x 1-3/8 x 7-1/2	16 x 35 x 190	3/4 x 3/8 x 1/4	19 x 9.5 x 6.4
KTH-1759	C Type	2	5/8/ x 3/8 x 3	16 x 9.5 x 76	3/4 x 3/8 x 1/4	19 x 9.5 x 6.4

10

**Knurling Tool Holder – Quick Acting Type**

Simple scissor & clamp design, extremely fast set-up.

Complete with one set of diamond shaped medium pitch knurls – 3/8" x 3/4" x 1/4" (9.5mm x 19mm x 6.35mm).

Depth of knurling impression can be pre-set for production work.

Cat. No.	Length		Shank Size		Capacity	
	Inch	mm	Inch	mm	Inch	mm
KTH-1400	6	150	1/2 x 5/8	12.5 x 16	1/16 - 2-1/4	1.5 - 56.4
KTH-1401	8-1/4	209	5/8 x 3/4	16 x 19	2-1/2 - 4-1/2	62 - 112



**11 Spare Knurls**

Spare knurls are manufactured in complete variety of pitches & have precision cut teeth that are correctly hardened for producing clear-cut patterns over a long period.

All H.S. knurls are made of best quality cutting steel that has longer life. The holes of these knurls are made concentric to ensure uniform & clear results.

In general language the commonly used knurls are Fine, Medium & Coarse whereas Extra Fine & Extra Coarse is also required sometimes & can be supplied on request.

Cat. No.	Suitable For Knurling Tool Holders	Cut	Pitch	Knurl Dimensions ( Dia. x Thickness x Hole )	
				Inch	mm
SK-1500	KTH - 1015, 1017, 1020, 1114, 1115, 1757, 1758 & 1759	Extra Fine, Fine, Medium, Coarse & Extra Coarse	Straight, Right, Left & Diamond	3/4 x 3/8 x 1/4	19 x 9.5 x 6.4
SK-1501	KTH - 1019	Extra Fine, Fine, Medium, Coarse & Extra Coarse	Straight & Diamond	3/4 x 1/4 x 1/4	19 x 6.4 x 6.4
SK-1502	KTH - 1027	Extra Fine, Fine, Medium, Coarse & Extra Coarse	Right & Left	5/8 x 3/16 x 1/4	16 x 4.5 x 6.4
SK-1503	KTH - 1112, 1113, 1755 & 1756	Extra Fine, Fine, Medium, Coarse & Extra Coarse	Right & Left	5/8 x 5/16 x 7/32	16 x 8 x 5.5

**12 Universal Tool Holders**

Accurately machined & ground finished in black mottle, heat treated & hardened.

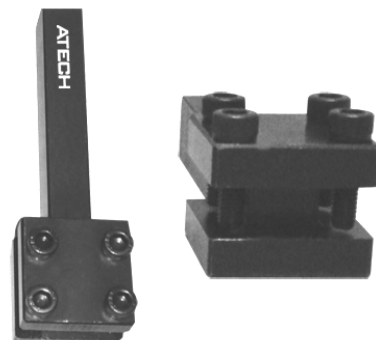
These can be used either straight, right or left hand & are most useful for light turning work.

Supplied without tool bits, allen key provided.

Cat. No.	Capacity		Holder Size ( L x W x H )
	Inch	mm	mm
UTH-2801	1/4	6.4	110 x 12 x 16
UTH-2802	3/8	9.5	120 x 14 x 18
UTH-2803	1/2	12.5	145 x 18 x 20
UTH-2804	5/8	16	175 x 20 x 25
UTH-2805	3/4	19	250 x 25 x 32



11



12

**14** **T-Tap Wrench – Solid Jaws**

For holding taps, reamers, screw extractors & other hand turned tools.

Ground finished, jaws are hardened & tempered with knurled chuck for a better grip.

The four slotted jaws chuck provides firm grip to the piece making it rigid & less apt to become loose.



Cat. No.	Model No.	Tap Capacity
		Inch
TTW-2201	A	1/16 - 5/32
TTW-2202	B	5/32 - 1/4
TTW-2203	C	3/16 - 5/16
TTW-2204	D	1/4 - 1/2

**15** **Tap Wrench – Replaceable Jaws**

High quality tap wrenches for hand tapping, drilling & reaming operations.

Jaws are hardened & tempered, knurled chuck providing a better grip.

Split jaw & positive holding grip, ground finished.



Cat. No.	Tap Capacity
	Inch
TTW-2210	1/16 - 5/32
TTW-2211	5/32 - 1/4
TTW-2212	1/4 - 1/2

**16** **T-Tap Wrench – Long Handled**

Designed with its long reach to simplify tapping operations in awkward situations, especially in depths.

Jaws are hardened & tempered with a shiny ground finish.



Cat. No.	Tap Capacity	Available Length
	Inch	Inch
TTW-2221	5/32 - 1/4	6, 9 & 12
TTW-2222	1/4 - 1/2	6, 9 & 12

**17** **Mini Tap Wrench**

Light weight for precision & small tapping applications.



Cat. No.	Tap Capacity
	Inch
TTW-2224	1/4
TTW-2225	1/2

**18** **Tap Extensions**

All steel construction with knurled grip chuck.

Available in ground finish as well as black mottle finish.



Cat. No.	Length		Tap Capacity Inch
	Inch	mm	
TEX-2229	7	175	No. 0 to 12
TEX-2230	10-3/4	269	No. 12 to 1/2

**19** **T-Tap Wrench – Pilot Spindle**

Tapping accessory for lathes or drill presses.

Suitable for threading drilled hole manually at one machine location without moving work-piece.

Shiny ground finish.

Jaws are hardened & tempered, reduces tap breakage.



Cat. No.	Tap Capacity
	Inch
TTW-2238	5/32 - 1/4
TTW-2239	1/4 - 1/2

**20** **Interchangeable Tap Wrench Holder Set**

A very handy tool set which includes reversible ratchet mechanism.

Consists of two chucks & two handles having 4" (100 mm) & 7" (175 mm) length.

Both chucks as well as the handles are interchangeable, chrome plated body.



Cat. No.	Small Chuck Range	Big Chuck Range
TTW-2260	5/32" - 1/4"	1/4" - 1/2"



21

**T-Tap Wrench – Ratchet Type**

Precisely constructed & designed with a sliding T handle, for fitting into tight spaces with ease.

The ratchet can be set for right or left hand operations or direct engagement in neutral position.

For holding taps, reamers, screw extractors & other hand turned tools, jaws are hardened & tempered.



Cat. No.	Tap Capacity
	Inch
TTW-2247	1/16 - 5/32
TTW-2248	5/32 - 1/4
TTW-2249	1/4 - 1/2

Cat. No.	Tap Capacity	Available Length
	Inch	Inch
TTW-2250	5/32 - 1/4	12
TTW-2251	1/4 - 1/2	12

22

**Adjustable Straight Tap Wrench**

High quality tool for hand tapping operations with accurately hardened & tempered steel jaws.

Supplied in drop forged, steel, malleable & die cast.



Cat. No.	Tap Capacity	Overall Length	
	Inch	Inch	mm
STW-2301	1/16 - 1/4	6	150
STW-2302	3/32 - 3/8	9	225
STW-2303	5/32 - 1/2	11	275
STW-2304	1/4 - 5/8	12	300
STW-2305	1/4 - 3/4	14	350
STW-2306	5/16 - 1	18	450
STW-2307	3/8 - 1.1/4	21	525
STW-2308	1/2 - 1.1/2	25	625
STW-2309	3/4 - 2	45	1125
STW-2310	3/4 - 2.1/2	47	1175

23

**Round Stock Die Holder**

Precision die holders of highest quality for holding adjustable round split dies.

Manufactured from selected steel, these die stocks have a rugged construction. The handle ends are knurled for comfortable non-slip grip.

Four tapped holes are given, one for adjusting screw & three for grub screws.



Cat. No.	Outside Dia. Of Die		Length
	Inch		Inch
RDH-2320	5/8		5-1/2
RDH-2321	13/16		6-1/2
RDH-2322	1		8-1/2
RDH-2323	1-5/16		10
RDH-2324	1-1/2		12
RDH-2325	2		15
RDH-2326	2-1/2		19
RDH-2327	3		22
RDH-2328	4		29
RDH-2329	5		33

24

**Floating Die Holder**

Most suitable for short & medium run threading of shafts.

Most convenient for use on lathes, milling machine & tapping tool.

Manufactured from solid one piece of steel.



Cat. No.	Outside Dia. Of Die		Shank Dia.		Overall Length		Body Dia.	
	Inch	mm	Inch	mm	Inch	mm	Inch	mm
FDH-2337	13/16	20	1/2	12.5	3	75	1-1/2	37
FDH-2338	1	25	1/2	12.5	3	75	1-1/2	37
FDH-2339	1-1/2	37	3/4	19	3	75	2	50

25

**Saw Holder Circular**

Most useful for saws & cutters of following standard hole sizes: 1/2", 5/8", 3/4", 7/8" & 1" with thickness up-to 3/16" & diameter up-to 4".

Spring loaded mechanism. Suitable for standard collets, cutters, chucks, various wheels & brushes etc.

Locked in telescopic centering assembly. Supplied complete with allen key.



Cat. No.	Shank Dia.		Overall Length	
	Inch	mm	Inch	mm
SHC-2340	1/2	12.5	2-1/2	62

**26** **R8 Saw Holder Circular**

Offers flexibility in sawing operation.

Spring loaded mechanism accepts saw blades with hole diameter from 1/2" to 1".

Blades are firmly secured in position with hex head screw.

Cat. No.
SHC-2910



**27** **Fly Tool Cutter Holders**

Made of hardened steel, counter balanced for faster feed & smooth finishes.

For milling wide surfaces, combination of 2 sets of 3 pieces each available with wooden stand.

Machines up-to 6" wide surface with a standard tool bit.

Supplied without tool bits.

Cat. No.	Head Dia.		Shank Size		Tool Bit Size	
	Inch	mm	Inch	mm	Inch	mm
FTC-2610	3/4	19	1/2	12.5	3/16	4.5
FTC-2611	1-1/8	29	1/2	12.5	1/4	6.4
FTC-2612	1-1/2	37	1/2	12.5	5/16	8
FTC-2614	1-1/2	37	3/4	19	5/16	8
FTC-2615	2	50	3/4	19	5/16	8
FTC-2616	2-1/2	62	3/4	19	5/16	8
FTC-2617	3 PC Set of 2610, 2611 & 2612					
FTC-2618	3PC Set of 2614, 2615 & 2616					



**28** **R- 8 Fly Cutter**

Applicable for boring through holes with suitable tool bits. Counter-balanced & fully hardened.

Supplied without tool bits. Available in black mottle finish as well as ground finish.

Cat. No.	Head Dia.		Tool Bit Size	
	Inch	mm	Inch	mm
FTC-2620	2-1/2	62	5/16	8



29

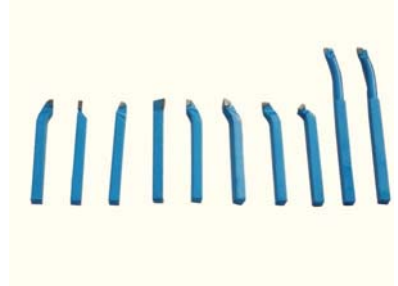
**Brazed Carbide Lathe Turning Tools**

Shapes including Parting off, Boring, Right & Left Hand Turning, Facing & Chamfering.

Proper brazing of the carbide tips ensures no breakage or chipping of any sort while the tool is in use.

Extended tool life due to the thickened steel construction immediately behind the brazed on carbide tip for a heavier, chatter free cut, a deeper bore & more precise work.

Different forms can be supplied separately.



Cat. No.	Shank Size
LTT-2840	6 mm
LTT-2841	8 mm
LTT-2842	10 mm
LTT-2843	12 mm
LTT-2844	1/4"
LTT-2845	5/16"
LTT-2846	3/8"
LTT-2847	1/2"

30

**HSS Lathe Turning Form Tools**

Manufactured from high speed steel. Properly heat treated & grounded shanks.

These are a set of 8 HSS lathe tools including Parting, Boring, Threading, Corner Finishing, Straight Finishing, Right & Left Hand Turning, & Corner tools.

Different forms can be supplied separately.



Cat. No.	Shank Size
LTT-2820	3 mm
LTT-2821	6 mm
LTT-2822	8 mm
LTT-2823	10 mm
LTT-2824	12mm
LTT-2825	1/8"
LTT-2826	1/4"
LTT-2827	5/16"
LTT-2828	3/8"
LTT-2829	1/2"

**31** **Brazed Carbide Boring Bar Set**

Rugged construction of these boring bars provides a longer tool life due to the thickened steel construction immediately behind the brazed on carbide tip for a heavier, chatter free cut, a deeper bore & more precise work.

Tip design allows flat-bottom holes or faces to be bored.

Each bar is of a different length to cover maximum applications.

Shanks are precision ground & hardened for greater rigidity.

Sets are supplied in fine finished wooden stand.



Cat. No.	Shank Size	Description
	Inch	
BB-2808	3/8	9 PC Set
BB-2809	1/2	9 PC Set
BB-2810	5/8	12 PC Set
BB-2811	3/4	12 PC Set
BB-2812	1	7 PC Set

**32** **HSS Boring Bar Set**

Single piece rugged construction.

Fully hardened having precision ground shanks & which suits many of today's popular boring heads.

Sets are supplied in fine finished wooden stand.



Cat. No.	Shank Size	Description
	Inch	
BB-2814	3/8	8 PC Set
BB-2815	1/2	10 PC Set
BB-2816	5/8	10 PC Set
BB-2817	3/4	14 PC Set

**33** **Circular Saw Arbors**

For saw blades from .001" to 3/16" thickness.

Sets are supplied in fine finished wooden stand.



Cat. No.	Flange Size	Shank Size	Suitable For Saw Blade Hole Dia.
CSA-2900	1/2"	1/2"	1/4"
CSA-2901	5/8"	1/2"	3/8"
CSA-2902	3/4"	1/2"	1/2"
CSA-2903	Set of above 3 Saw Arbors in a Wooden Stand		
CSA-2904	1"	5/8"	5/8"

34

**Single Ended Boring Bars**

Machined from selected steel for greater strength, black mottle finish.

Hole to accept standard high speed steel or carbide tool bits held in place with allen screws.

Supplied with allen key but without tool bit.



Cat. No.		Diameter Of Bar	Overall Length	Bit Size
45°	90°	Inch	Inch	
BB-2750	BB-2762	1/4	2-1/2	5/32" Round
BB-2751	BB-2763	5/16	2-1/2	3/16" Round
BB-2752	BB-2764	3/8	3	3/16" Round
BB-2753	BB-2765	1/2	3	3/16" Square
BB-2754	BB-2766	9/16	4-1/2	3/16" Square
BB-2755	BB-2767	5/8	5	1/4" Square
BB-2756	BB-2768	3/4	6	1/4" Square
BB-2757	BB-2769	1	6	5/16" Square
BB-2758	BB-2770	1	6	3/8" Square
BB-2759	BB-2771	1-1/8	7	7/16" Square
BB-2760	BB-2772	1-1/4	8	1/2" Square
BB-2761	BB-2773	1-1/2	9	1/2" Square

35

**Calibrated Boring Bars - Double Ended**

Bars are permanently graduated in 1/4" calibration to speed production by indicating depth of bore.

Supplied without tool bits.

Allen key provided.



Cat. No.	Diameter Of Bar	Overall Length	Bit Size
BB-2740	3/8"	6"	3/16" Round
BB-2741	1/2"	6"	3/16" Square
BB-2742	1/2"	9"	3/16" Square
BB-2743	5/8"	10"	3/16" Square
BB-2744	3/4"	12"	1/4" Square
BB-2745	1"	12"	1/4" Square
BB-2746	1-1/4"	16"	3/8" Square
BB-2747	1-1/2"	18"	3/8" Square



**Double Ended Boring Bars**

One end is broached at a 90° angle & the opposite is broached at a 45° angle for square tool bits.

Black mottle finish. Supplied with allen key but without tool bit.

Broached holes to accept standard high speed steel or carbide tool bits held in place with allen screws.

Sets are supplied in fine finished wooden stand.

Cat. No.	Diameter Of Bar	Overall Length	Bit Size
BB-2701	1/4"	5"	5/32" Round
BB-2702	5/16"	5"	3/16" Round
BB-2703	3/8"	6"	3/16" Round
BB-2704	1/2"	6"	3/16" Square
BB-2705	1/2"	9"	3/16" Square
BB-2706	9/16"	6-3/4"	3/16" Square
BB-2707	9/16"	6-3/4"	1/4" Square
BB-2708	9/16"	9"	3/16" Square
BB-2709	5/8"	10"	1/4" Square
BB-2710	3/4"	8"	1/4" Square
BB-2711	3/4"	12"	1/4" Square
BB-2712	15/16"	9"	5/16" Square
BB-2714	1"	12"	1/4" Square
BB-2715	1"	12"	5/16" Square
BB-2716	1"	12"	3/8" Square
BB-2717	1-1/8"	14"	7/16" Square
BB-2718	1-1/4"	16"	1/2" Square
BB-2719	1-1/2"	18"	1/2" Square



Cat. No.	Double End Boring Bar Set Consisting	Case
BB-2720	3/8" , 1/2" , 5/8" , 3/4" & 1"	Wood Stand



**Lathe Boring Tool**

Made from special steel & accurately machined.

Individually boxed, contains holder & one double ended boring bar.

Supplied without tool bits, black mottle finish.



Cat. No.	Diameter Of Bar	Overall Length	Bit Size
LBT-2920	7/16" x 5"	5/16" x 5/8" x 4-1/2"	3/16"
LBT-2921	9/16" x 6-3/4"	3/8" x 7/8" x 5-3/8"	3/16"
LBT-2922	3/4" x 8"	1/2" x 1-1/8" x 6-1/8"	1/4"
LBT-2923	15/16" x 9"	5/8" x 1-3/8" x 7-7/16"	5/16"

**38** **Double Ended Boring Bars with Holders**

Manufactured from tool steel & ground finished in black mottle. Bit hole angle 90° & 45°.

Double ended boring bars & holder comes complete with screws & allen keys.

Supplied without tool bits.



Cat. No.	Bar Size		Holder Size		Square Bit Size
	Dia.	Length	Length	Square	Inch
BB-2730	3/8"	4-1/2"	2-1/4"	1/2"	1/8"
BB-2731	7/16"	5-1/4"	2-1/2"	1/2"	3/16"
BB-2732	9/16"	6-3/4"	3"	5/8"	1/4"
BB-2733	3/4"	9-1/4"	3-3/4"	7/8"	5/16"
BB-2734	7/8"	11-1/2"	4-1/2"	1-1/4"	3/8"
BB-2735	1-1/8"	12-3/4"	4-1/2"	1-3/8"	7/16"
BB-2736	1-3/16"	13-3/4"	5"	1-5/8"	1/2"

**39** **Piston Type Quick Change Tool Post Set**

All working parts are hardened & ground.

Completely sealed for maintenance-free operation.

Increases productivity of all lathe operations.

**Holders included**

2 - Turning Tool Holders.

1 - Knurling Tool Holder.

1 - Parting Tool Holder.

1 – Boring Blade Holder / Drill Chuck Holder.

2 - Hex Keys.

1 - Main Block with 2 Working Stations.



<b>Cat. No.</b>
QCTP-2980





**Boring Heads**

Boring head delivers the optimum in precision performance. Machined from high grade steel with tool blocks hardened & ground.

Rugged construction & maximum bearing surface between the sliding gib & the body. Superior rigidity for chatter free boring.

Non-Reflecting satin chrome body allows easy reading and adjustment. Threaded back for interchangeable shanks make it useful for machines with different tapers.

Features .0005" graduation on dial for accurate hole sizing.

Cat. No.	Cat. No. R-8 Shank	Head Dia.	Thread Size	Overall Length	Max Off Set	Center Distance Between Holes	Cross Vertical Hole Size
BH-2930	BH-2934	2"	7/8" x 20	2-13/32"	5/8"	5/8"	1/2"
BH-2931	BH-2935	2"	1-1/2" x 18	2-13/32"	5/8"	5/8"	1/2"
BH-2932	BH-2936	3"	1-1/2" x 18	3-5/32"	1"	15/16"	3/4"
BH-2933	BH-2937	4"	1-1/2" x 18	3-3/4"	1-5/8"	1-1/4"	1"



**41 Boring Heads with Integrated Shank**

Single Piece rugged construction for a smooth & chatter less operation.

Sturdy unit of extending boring range, capable of peeling off heavy roughing cut as well as tool of extreme sensitivity.

Black oxide finished with hardened steel slide.

Available in R8 & straight shanks.



Cat. No.	Shank Type	Head Dia.	Overall Length
BH-2940	R8	2-1/2"	7-3/16"
BH-2941	3/4 St. Shank	2-1/2"	7-3/16"

**42 Shanks for Boring Head**

Manufactured from alloy steel, hardened & precision ground to ensure long life & accuracy.]

These shanks allow versatile use of boring heads.

Spare shanks also available on request.



Shank Type	Cat. No. For Thread Size	
	7/8" x 20	1-1/2" x 18
R-8	SBH-2950	SBH-2960
MT-2	SBH-2951	SBH-2961
MT-3	SBH-2952	SBH-2962
MT-4	SBH-2953	SBH-2963
1/2" St	SBH-2954	SBH-2964
3/4" St	SBH-2955	SBH-2965
1" St	SBH-2956	SBH-2966
1-1/4 St	SBH-2957	SBH-2967
1-1/2 St	SBH-2958	SBH-2968