

1 Protractor & Depth Gauge

Manufactured from polished stainless steel.

Graduations are properly etched from 0° to 180°.

Easy to read gauge provides precise depth measurement in small slots & holes, as well as functions as a protractor for measuring angles.

Spring tensioned nut for easy depth & angle measurement & for locking purposes.

Fitted with narrow steel rule graduated 64th on one side & 0.5 mm on reverse.



| Cat. No. | Description |
|----------|-------------|
| MMT-4000 | Round |
| MMT-4001 | Rectangular |

2 Protractors

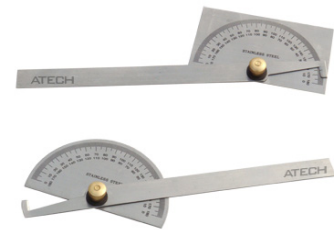
Protractors are manufactured from polished stainless steel.

This is the most useful & accurate tool for machinists, draftsman & engineers to draw radial lines at any angle, setting bevels & transferring angles.

Available in semi-circular head & rectangular head with double graduations from 0° to 180° in opposite directions.

The Rectangular head protractors provide four working edges.

Available in riveted nut & brass nut.



| Cat. No. | Description |
|----------|--------------------------------|
| MMT-4003 | Round Head - Riveted Nut |
| MMT-4004 | Round Head - Brass Nut |
| MMT-4005 | Rectangular Head - Riveted Nut |
| MMT-4006 | Rectangular Head - Brass Nut |

3 Carbide Tipped Scriber – Pocket Type

6" (150 mm) long hexagonal body with clip, point covered with plastic cap.

Can be used on any surface including hard as well as carbide.

| Cat. No. | Description |
|----------|----------------------------|
| MMT-4042 | Chrome finished Steel Body |



4

Depth & Angular Gauge

Spring tension knurled nut for easy depth measurement & locking.

Top & bottom locating faces of the body are accurately ground.

Fitted with narrow steel rule graduated 64th on one side & 0.5 mm on reverse.

Depth & angular gauge has an additional feature permitting its use also as a protractor for measuring angles.



| Cat. No. | Description | Length | |
|----------|---------------------|--------|-----|
| | | Inch | mm |
| MMT-4008 | Plain Depth Gage | 6 | 152 |
| MMT-4009 | Plain Depth Gauge | 12 | 304 |
| MMT-4010 | Angular Depth Gauge | 6 | 152 |

5

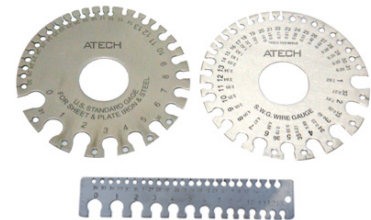
Wire Gauge – Round & Rectangular

Manufactured from polished stainless steel.

All gauges are surface ground.

Permanently deep etched graduations.

Available in S.W.G. standard & A.S.G. standard.



| Cat. No. | Description |
|----------|-------------|
| MMT-4015 | Round |
| MMT-4016 | Rectangular |

6

Economy Micrometers

Handy tool for measuring purposes.

Available in both, metric & Inch size.



| Cat. No. | Range |
|----------|-------------|
| MMT-4020 | 0 - 1" |
| MMT-4021 | 1-2" |
| MMT-4022 | 2-3" |
| MMT-4023 | 3-4" |
| MMT-4024 | 0 - 25 mm |
| MMT-4025 | 25 - 50 mm |
| MMT-4026 | 50 - 75 mm |
| MMT-4027 | 75 - 100 mm |



Radius Gauge

These gauges are made of high grade polished steel.

Gauge features leafs for measuring both concave & convex radius.

All leafs are clearly marked with radius size.

Handy device for checking radius of tools & dies easier & faster.

| Cat. No. | Range | No. Of Leafs |
|----------|-----------------------|--------------|
| MMT-4030 | 1/32 to 1/4 by 1/64" | 30 |
| MMT-4031 | 17/64 to 1/2 by 1/64" | 32 |
| MMT-4032 | 1 to 7 mm | 34 |
| MMT-4033 | 7.5 to 15 mm | 32 |
| MMT-4034 | 15.5 to 25 mm | 30 |
| MMT-4035 | 0.75 to 5 by 0.25 mm | 18 |
| MMT-4036 | 5.5 to 13 by 0.5 mm | 16 |



RADIUS GAUGE – RING TYPE

| Cat. No. | Range | No. Of Leafs |
|----------|------------------------|--------------|
| MMT-4037 | 1/32 to 17/64 by 1/64" | 16 |
| MMT-4038 | 9/32 to 33/64 by 1/64" | 16 |
| MMT-4039 | 0.75 to 5 by 0.25 mm | 18 |
| MMT-4040 | 5.5 to 13 by 0.5 mm | 16 |



Twist Drill Gauge

Manufactured from stainless steel.

For twist drills having an acute angle of 118° up-to 2" (50mm) diameter.

| Cat. No. | Overall Length | |
|----------|----------------|-----|
| | Inch | mm |
| MMT-4045 | 4-1/2 | 114 |



9

Vernier Calipers

Handy tool for external, internal & depth measurement.

Precision type features a thumb controlled ball movement & is nickel-plated.

Columbus type features thumb-controlled movement with locking device.

Graduations in metric & imperial both.

Brass calipers are available in 4" (100mm) only.



| Cat. No. | Range | | Description |
|----------|-------|-------|----------------|
| | Inch | mm | |
| MMT-4050 | 0-5 | 0-125 | Columbus Type |
| MMT-4051 | 0-6 | 0-150 | Columbus Type |
| MMT-4052 | 0-6 | 0-150 | Precision Type |

10

Screw Cutting Gauge

Manufactured from stainless steel & surfaces are properly ground.

Permanently deep etched graduations.

Used for checking the angles when grinding the profiles of lathe screw cutting tools.

Accurate thread profiles 47-1/2° British Association, 14-1/2° Acme, 60° American & metric, 55° Whitworth & BSF.



| Cat. No. | Overall Length | |
|----------|----------------|----|
| | Inch | mm |
| MMT-4065 | 2 | 50 |

11

Round Bar Center Finder

Accurately & quickly locates center on round work-pieces.

Simple to use, just place the tool in drill chuck or collets & line up pointer to scribed line on shaft.



| Cat. No. | Shank Dia. | | Overall Length | |
|----------|------------|-----|----------------|-----|
| | Inch | mm | Inch | mm |
| MMT-4250 | 3/8 | 9.5 | 4-1/8 | 105 |

12

Screw Pitch Gauge

These gauges are made of high grade polished steel.

All leaves are clearly marked with size.

A durable tool that provides maximum accuracy and is easy to use on all types of threads to determine their pitch.

Lock nut feature at both the ends to securely lock the leaves.

| Cat. No. | TPI. Range | No. Of Leafs | Thread Type |
|----------|--------------------------|--------------|---|
| MMT-4070 | 4-42 | 31 | American National – 60° |
| MMT-4071 | 4-84 | 52 | American National – 60° |
| MMT-4072 | 4-42 & 0.25 to 6.0 mm | 31 + 24 = 55 | Combination of American National 60° and Metric 60° threads. |
| MMT-4073 | 0.25 to 2.5mm | 28 | International Metric Standard 60° |
| MMT-4074 | 0.4 to 7.0mm | 23 | International Metric Standard 60° |
| MMT-4075 | 4 to 62 & 0.25 to 6.0 mm | 28 + 24 = 52 | Combination of Whitworth Standard 55° and Metric Standard 60° |
| MMT-4076 | 4 - 62 G | 28 | Whitworth Standard 55° |



14

Feeler Gauge

These gauges comprise a set of thin steel leaves which are manufactured from high grade polished steel.

The approximate thickness is marked on each leaf.

The leaves are housed with a steel case with lock nut which serves as a protection when the leaves are folded inside & a handle when the gauge is in use.

The lock nut holds the leaves in any desired position.

These gauges are applied to various operations such as measuring the gap between a shaft & its bearings, gauging the gap between electrical contacts or in measuring the flatness of jigs or fixtures when resting on a marking-out table or surface plate.

Available loose, without lock nut also.

| Cat. No. | No. Of Leafs | Leafs Thickness Range |
|--|--------------|-----------------------|
| MMT-4080 | 9 | .0015" - .015" |
| MMT-4081 | 26 | .0015" - .025" |
| Single Leaf can be supplied on request | | |

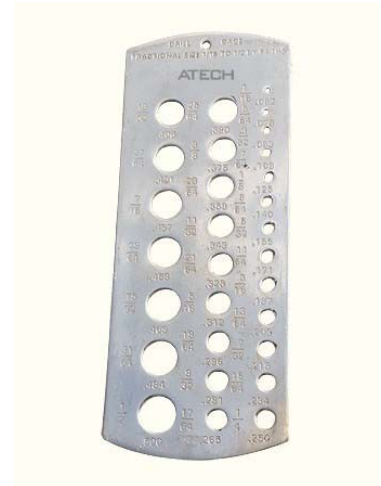


15 **Drill Gauge**

Manufactured from good quality stainless steel.

Graduations are properly etched for true valuations.

| Cat. No. | Size |
|----------|--------------|
| MMT-4085 | No. 1 - 60 |
| MMT-4086 | 1/16" - 1/2" |
| MMT-4087 | 1 - 13 mm |
| MMT-4088 | A - Z |



16 **Square Leg Dividers – Heavy Duty Compass**

Manufactured from high quality steel & have a riveted head.

Overall thickened including the points.

Square legs for a better balance & grip.

Hardened & ground edges for rigid jobs.

| Cat. No. | Nominal Size | |
|----------|--------------|-----|
| | Inch | mm |
| MMT-4100 | 6 | 152 |
| MMT-4101 | 8 | 203 |
| MMT-4102 | 10 | 254 |
| MMT-4103 | 12 | 304 |
| MMT-4104 | 14 | 355 |
| MMT-4105 | 16 | 406 |
| MMT-4106 | 18 | 457 |
| MMT-4107 | 20 | 508 |
| MMT-4108 | 24 | 609 |



17 **Universal Transfer Punch & Aligner**

Manufactured from hardened steel.

Precision ground punch.

Perfect hole center alignment.

Ideal for toolmakers, machine & model engineers.

| Cat. No. | Range | |
|----------|----------------|---------|
| | Inch | mm |
| MMT-4140 | 3/16 to 5/8 | 5 to 16 |
| MMT-4141 | 3/16 to 1-3/16 | 5 to 30 |



18 **Wing Compass**

These are manufactured from good quality steel & have a riveted head.

Overall thickened including the points.

Square legs for a better balance & grip.

Hardened & ground edges for rigid jobs.



| Cat. No. | Nominal Size | |
|----------|--------------|-----|
| | Inch | mm |
| MMT-4120 | 6 | 152 |
| MMT-4121 | 8 | 203 |
| MMT-4122 | 10 | 254 |
| MMT-4123 | 12 | 304 |
| MMT-4124 | 14 | 355 |
| MMT-4125 | 16 | 406 |
| MMT-4126 | 18 | 457 |
| MMT-4127 | 20 | 508 |
| MMT-4128 | 24 | 609 |

19 **Flat Leg – Firm Joint Calipers**

Comes in Divider, Inside & Outside.

All are manufactured from high grade polished steel.

Firm joint to adjust tension as desired.

Legs are well balanced with uniform tension.

All are measured from the joint to the point.



| Cat. No. | Cat. No. | Cat. No. | Length | |
|----------|----------|----------|--------|-----|
| | | | Inch | mm |
| MMT-4150 | MMT-4162 | MMT-4174 | 3 | 76 |
| MMT-4151 | MMT-4163 | MMT-4175 | 4 | 101 |
| MMT-4152 | MMT-4164 | MMT-4176 | 6 | 152 |
| MMT-4153 | MMT-4165 | MMT-4177 | 8 | 203 |
| MMT-4154 | MMT-4166 | MMT-4178 | 10 | 254 |
| MMT-4155 | MMT-4167 | MMT-4179 | 12 | 304 |
| MMT-4156 | MMT-4168 | MMT-4180 | 16 | 406 |
| MMT-4157 | MMT-4169 | MMT-4181 | 18 | 457 |
| MMT-4158 | MMT-4170 | MMT-4182 | 20 | 508 |
| MMT-4159 | MMT-4171 | MMT-4183 | 24 | 609 |
| MMT-4160 | MMT-4172 | MMT-4184 | 30 | 762 |
| MMT-4161 | MMT-4173 | MMT-4185 | 36 | 914 |

20

Flat Leg - Spring Calipers

Comes in Divider, Inside, Outside & Jenny.

All are manufactured from high grade polished steel.

Legs are well balanced with uniform tension.

The spring & the points are hardened & tempered.

Adjusting nuts for faster handling.

All are measured from the joint to the point.



| Cat. No. | Cat. No. | Cat. No. | Cat. No. | Length | |
|----------|----------|----------|----------|--------|-----|
| | | | | Inch | mm |
| MMT-4200 | MMT-4212 | MMT-4225 | MMT-4237 | 3 | 76 |
| MMT-4201 | MMT-4214 | MMT-4226 | MMT-4238 | 4 | 101 |
| MMT-4202 | MMT-4215 | MMT-4227 | MMT-4239 | 6 | 152 |
| MMT-4203 | MMT-4216 | MMT-4228 | MMT-4240 | 8 | 203 |
| MMT-4204 | MMT-4217 | MMT-4229 | MMT-4241 | 10 | 254 |
| MMT-4205 | MMT-4218 | MMT-4230 | MMT-4242 | 12 | 304 |
| MMT-4206 | MMT-4219 | MMT-4231 | MMT-4243 | 16 | 406 |
| MMT-4207 | MMT-4220 | MMT-4232 | MMT-4244 | 18 | 457 |
| MMT-4208 | MMT-4221 | MMT-4233 | MMT-4245 | 20 | 508 |
| MMT-4209 | MMT-4222 | MMT-4234 | MMT-4246 | 24 | 609 |
| MMT-4210 | MMT-4223 | MMT-4235 | MMT-4247 | 30 | 762 |
| MMT-4211 | MMT-4224 | MMT-4236 | MMT-4248 | 36 | 914 |

21

Surface Gauge – Round Fixed Base

Fixed surface gauges are well proportioned & rigid with accurately machined close grain cast Iron round base having a fixed spindle.

Consists of adjusting knob & hardened scriber.

Scriber can be rigidly secured at any angle of the spindle.

Very handy for simple marking operations.



| Cat. No. | Diameter Of Base | | Length Of Spindle | |
|----------|------------------|-----|-------------------|------|
| | Inch | mm | Inch | mm |
| MMT-4260 | 2-7/8 | 72 | 9 | 225 |
| MMT-4261 | 2-7/8 | 72 | 12 | 300 |
| MMT-4262 | 3-1/8 | 80 | 18 | 450 |
| MMT-4263 | 3-1/8 | 80 | 20 | 500 |
| MMT-4264 | 5 | 125 | 40 | 1000 |

22

Toolmakers Surface Gauge – Steel Base

This is an ideal tool in mechanics kit & is most useful for accurately transferring measurements or scribing lines on horizontal & vertical surfaces.

The steel base is precision ground & properly hardened on all contact faces, which serves as an accurate reference surface.

Hardened & ground vee-grooved base for cylindrical work.

Having fine adjustment & hard scriber point.

Provided with two retraceable gauge pins in the base to set against edge of a Surface Plate.

Spindle is adjustable to any angle even above or below the base level.



| Cat. No. | Base Dimension L x W x H | | Length Of Spindle | | Dia. Of Spindle | |
|----------|-----------------------------|---------------|-------------------|-----------|-----------------|------|
| | Inch | mm | Inch | mm | Inch | mm |
| MMT-4266 | 2-3/16 x 1-5/8 x 3/4 | 55 x 40 x 20 | 4 & 7 | 100 & 175 | 1/4 | 6.35 |
| MMT-4267 | 3-1/4 x 2-1/2 x 1 | 82 x 63 x 25 | 9 & 12 | 225 & 300 | 3/8 | 9.5 |
| MMT-4268 | 4 x 3-1/2 x 1-1/8 | 100 x 90 x 30 | 12 & 18 | 300 & 450 | 3/8 | 9.5 |
| MMT-4269 | 3-1/4 x 2-1/2 x 1 | 82 x 63 x 25 | 9 | 225 | 3/8 | 9.5 |
| MMT-4270 | 3-1/4 x 2-1/2 x 1 | 82 x 63 x 25 | 12 | 300 | 3/8 | 9.5 |

23

Solid Angle Plate

Manufactured from close grained cast Iron & properly seasoned to avoid any kind of distortion.

These are for performing convenient set-ups in tooling, production & for inspection work.

Sides & ends are precision ground, flat & square.

Are 90° true to one another.

Webbed Angle Plates can also be supplied on request.



| Cat. No. | Size | |
|----------|--------------|----------------|
| | Inch | mm |
| MMT-4280 | 1x1x1 | 25x25x25 |
| MMT-4281 | 2 x 2 x 2 | 50 x 50 x 50 |
| MMT-4282 | 3 x 3 x 3 | 75 x 75 x 75 |
| MMT-4283 | 4 x 4 x 4 | 100 x 100 x100 |
| MMT-4284 | 5 x 5 x 5 | 125 x 125 x125 |
| MMT-4285 | 6 x 6 x 6 | 150 x 150 x150 |
| MMT-4286 | 8 x 8 x 8 | 200 x 200 x200 |
| MMT-4287 | 10 x 10 x 10 | 250 x 250 x250 |
| MMT-4288 | 12 x 12 x 12 | 300 x 300 x300 |



Slotted Angle Plates

Manufactured from close grained cast iron & seasoned to eliminate any kind of distortion.

Clamping slots for easy mounting of work pieces for setting up jigs & fixtures on drill presses, milling machines, planing machines etc.

90° true to one another. Available in:

- a) **Webbed End**: Machined on outside surfaces & edges.
- b) **Open End** : Machined all over except slots.



| Cat. No. | | Length | | Width | | Height | |
|------------|----------|--------|-----|-------|-----|--------|-----|
| Webbed End | Open End | Inch | mm | Inch | mm | Inch | mm |
| MMT-4290 | MMT-4300 | 3 | 75 | 2-1/2 | 63 | 2 | 50 |
| MMT-4291 | MMT-4301 | 3-1/2 | 90 | 3 | 75 | 2-1/2 | 63 |
| MMT-4292 | MMT-4302 | 4-1/2 | 115 | 3-1/2 | 90 | 3 | 75 |
| MMT-4293 | MMT-4303 | 6 | 150 | 5 | 125 | 4-1/2 | 115 |
| MMT-4294 | MMT-4304 | 7 | 175 | 5-1/2 | 140 | 4-1/2 | 115 |
| MMT-4295 | MMT-4305 | 8 | 200 | 6 | 150 | 5 | 125 |
| MMT-4296 | MMT-4306 | 9 | 225 | 7 | 175 | 6 | 150 |
| MMT-4297 | MMT-4307 | 10 | 250 | 8 | 200 | 6 | 150 |
| MMT-4298 | MMT-4308 | 12 | 300 | 9 | 225 | 8 | 200 |



Stepped Angle Plates

An extremely versatile angle plate having tapped holes for clamping work in any position required & a step for holding a wide variety of work-pieces.

Single piece rigid construction.

These angle plates are hardened & precision ground, square & parallel.

24 tapped holes allow fastening to fixtures & clamping work to the angle plate.



| Cat. No. | Size | | Tapped Holes Threads |
|----------|-----------|-----------------|----------------------|
| | Inch | mm | |
| MMT-4310 | 3 x 3 x 3 | 75 x 75 x 75 | 1/4" BSW |
| MMT-4311 | 4 x 4 x 4 | 100 x 100 x 100 | 5/16" BSW |



Engineers Precision Square

Manufactured from finest quality ground steel.

Precision ground with hardened & tempered blade as well as stock to ensure straightness & parallelism.

Squares are accurate both inside & outside.

These are particularly useful for setting up & checking jobs where extreme accuracy is required.

| Cat. No. | Blade Length | | Stock Length | |
|----------|--------------|-----|--------------|-----|
| | Inch | mm | Inch | mm |
| MMT-4320 | 2 | 50 | 2 | 50 |
| MMT-4321 | 3 | 75 | 2.5 | 60 |
| MMT-4322 | 4 | 100 | 3 | 75 |
| MMT-4323 | 6 | 150 | 4 | 100 |
| MMT-4324 | 8 | 200 | 5 | 125 |
| MMT-4325 | 9 | 225 | 6 | 150 |
| MMT-4326 | 10 | 250 | 6 | 150 |
| MMT-4327 | 12 | 300 | 8 | 200 |
| MMT-4328 | 18 | 450 | 10 | 250 |
| MMT-4329 | 24 | 600 | 13 | 330 |
| MMT-4330 | 36 | 915 | 17.5 | 445 |



Marking Gauge

Tempered marking edge with metric graduations.

Graduations are properly etched & provide accurate measurements.

Polished steel finish.

| Cat. No. | Range |
|----------|--------|
| MMT-4314 | 200 mm |
| MMT-4315 | 250 mm |
| MMT-4316 | 300 mm |



28 Knife Straight Edge

Manufactured from selected steel, hardened & ground all over to precision.

One working end beveled.

| Cat. No. | Length | | Width | | Thickness | |
|----------|--------|-----|-------|----|-----------|-----|
| | Inch | mm | Inch | mm | Inch | mm |
| MMT-4336 | 2 | 50 | 1 | 25 | 1/8 | 3 |
| MMT-4337 | 3 | 75 | 1-1/8 | 28 | 5/32 | 3.5 |
| MMT-4338 | 4 | 100 | 1-1/8 | 28 | 5/32 | 3.5 |
| MMT-4339 | 6 | 150 | 1-3/8 | 35 | 1/4 | 6 |
| MMT-4340 | 8 | 200 | 1-3/8 | 35 | 1/4 | 6 |



29 Sine Bars

Both sine & rolls are hardened & ground for extreme accuracy.

Ideal tool for angular inspection & measurement purposes.

Various size holes are furnished for clamping purposes.

| Cat. No. | Width | Distance Between Rollers |
|----------|--------|--------------------------|
| MMT-4344 | 15/16" | 5" |
| MMT-4345 | 1" | 10" |
| MMT-4346 | 1" | 2-1/2" |
| MMT-4347 | 1" | 5" |
| MMT-4348 | 30 mm | 100 mm |
| MMT-4349 | 30 mm | 200 mm |
| MMT-4350 | 7/32" | 3" |



30 Center Squares

Manufactured from ground tool steel, hardened & tempered blade for a longer tool life.

An extremely useful tool for the tool maker at the bench or the machinist on the lathe for locating centers of round stocks / parts quickly & easily.

| Cat. No. | Work Diameter | |
|----------|---------------|----|
| | Inch | mm |
| MMT-4354 | 1-1/2 | 38 |
| MMT-4355 | 3 | 75 |



31 Wiggler & Center Finder Set

Used for accurately locating working points on lathes, drill presses, milling & other machines.

Set includes Disc contact attachment, Ball contact attachment, Needle point attachment, Off-set indicator holder & a Snap-In Chuck.

Body & balls are hardened.

Knurled collar adjusts chuck, spring tension & maintains adjustment.

Interchangeable shafts easily & quickly snap into place.



| Cat. No. | Description |
|----------|---------------------------------|
| MMT-4356 | Needle point attachment |
| MMT-4357 | Ball contact attachment |
| MMT-4358 | Disc contact attachment |
| MMT-4359 | Off-set indicator holder |
| MMT-4360 | Set complete with 4 attachments |

32 Edge & Center Finders

Edge & Center Finders are hardened all over & ground on all working surfaces.

Accurately locates the starting point for all types of machine work & jig boring.

Locate working edges like grooves, scribed lines, shoulders & centering points easily & accurately.



| Cat. No. | Description | Tip Diameter | Description |
|----------|-------------|-----------------|----------------------------------|
| MMT-4361 | 1/2" | .2000" & .5000" | Combination Edge & Center Finder |
| MMT-4362 | 3/8" | .2000" & .3730" | Combination Edge & Center Finder |
| MMT-4363 | 3/8" | .3750" | Center Finder Single End |
| MMT-4364 | 1/2" | .5000" | Center Finder Single End |
| MMT-4365 | 1/2" | .5000" | Plain Edge Finder Single End |
| MMT-4366 | 1/2" | .2000" | Edge Finder Double End |
| MMT-4367 | 3/8" | .2000" | Edge Finder Single End |
| MMT-4368 | 1/2" | .2000" | Edge Finder Single End |
| MMT-4369 | 10mm | 10 mm | Plain Edge Finder Single End |
| MMT-4370 | 12mm | 5 mm | Edge Finder Single End |

33 **Beam Trammels**

These are manufactured from chrome finished steel & are ideal for toolmakers, engineers, metalworkers for layout, scribing & measuring.

The top of the beam is partially flattened so that the trams would not twist from point pressure.

Also the heads are spring secured so they would not slide when adjusting nuts are loosened.



| Cat. No. | Scribes Circle Dia. | | Beam Size | |
|----------|---------------------|-----|-----------|-----|
| | Inch | mm | Inch | mm |
| MMT-4373 | 18 | 450 | 10-1/2 | 265 |
| MMT-4374 | 26 | 650 | 14-1/2 | 365 |
| MMT-4375 | 36 | 900 | 20 | 500 |

34 **Trammel Heads**

When mounted on a beam of suitable thickness, provides an efficient & convenient means of measuring the distance between two points that are too great to be reached with dividers & are also applicable for scribing or marking arcs & circles.

The right head additionally can take a pencil for rough marking initially.

The heads are die cast with black mottle finish.

Have hardened, forged steel scribing pins which are sharpened exceedingly well.

Unlimited radius lengths with your shop-made beam.

Supplied in pairs.

Supplied without beam.



| Cat. No. | Capacity Of Clamp Beams In Width | |
|----------|----------------------------------|---------|
| | Inch | mm |
| MMT-4380 | 3/4 - 1-1/2 | 19 - 38 |

35

Straight Edges – (Square & Bevelled Edges)

Finished ground on both sides & edges, having sight hole at one end.

This range of general purpose straight edges are made of hardened steel up-to size 12" (300 mm)

Sizes above 12" are made of high grade carbon steel & are unhardened.

Bevelled edge straight edges have an angle of 30°.

Supplied in light as well as heavy sections.

NOTE: Sizes upwards 24" supplied in heavy square edge section only



| Cat. No. | Cat. No. | Size | | Light Section | | Heavy Section | |
|-------------|---------------|------|------|---------------|-------|---------------|-------|
| | | | | Width | Thick | Width | Thick |
| Square Edge | Bevelled Edge | Inch | mm | mm | mm | Inch | mm |
| MMT-4400 | MMT-4420 | 6 | 150 | 25 | 3 | 30 | 4.5 |
| MMT-4401 | MMT-4421 | 10 | 250 | 30 | 4.5 | 45 | 6 |
| MMT-4402 | MMT-4422 | 12 | 300 | 30 | 4.5 | 45 | 6 |
| MMT-4403 | MMT-4423 | 18 | 450 | 45 | 6 | 55 | 8 |
| MMT-4404 | MMT-4424 | 20 | 500 | 45 | 6 | 55 | 8 |
| MMT-4405 | MMT-4425 | 24 | 600 | 55 | 8 | 70 | 10 |
| MMT-4406 | MMT-4426 | 30 | 750 | ----- | ----- | 70 | 11 |
| MMT-4407 | MMT-4427 | 36 | 900 | ----- | ----- | 75 | 11 |
| MMT-4408 | MMT-4428 | 40 | 1000 | ----- | ----- | 75 | 11 |
| MMT-4409 | MMT-4429 | 48 | 1200 | ----- | ----- | 88 | 12 |

36

Center Gauge

Manufactured from stainless steel, these are very useful for grinding and setting thread cutting tools.

Also can be applied for checking the pitch of threads through the permanently deep etched graduations in 14ths, 20ths, 24ths and 32nds of an inch.

These gauges meet the American National or US 60°, Whitworth or English 55° specifications.



| Cat. No. | Specification |
|----------|-------------------------------------|
| MMT-4389 | 55° Whitworth (English Standard) |
| MMT-4390 | 60° American National (US Standard) |

37 Universal Grinding Gauge

Manufactured from polished stainless steel. Graduations are properly etched for true valuations.

Measures square & hexagonal angles of 120°, 118°, 90°, 60°, 55°.

Also used as a twist drill gauge & thread gauge.



| Cat. No. | Overall Length | |
|----------|----------------|----|
| | Inch | mm |
| MMT-4395 | 3-3/4 | 95 |

38 Bore Gauge (Taper Gauge)

Manufactured from fine quality stainless steel.

Accurate & clear markings are given for precise measurement.

Useful tool for measuring cylindrical bores & for gauging slots.



| Cat. No. | Range |
|----------|--------------|
| MMT-4384 | 1-15 mm |
| MMT-4385 | 1/32" – 5/8" |

39 Granite Surface Plate

Manufactured out of selected black granite having uniform texture & colour.

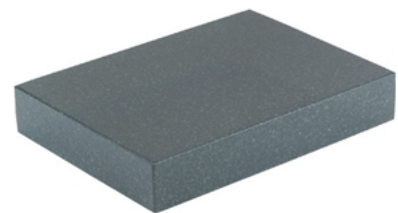
Accurately machined on tops, sides and ends, helps in checking parallelism & angles.

Their degree of flatness & overall quality makes them ideal bases for mounting mechanical, electronic & optical gauging systems.

Distortion free, good temperature stability, lapped to a velvet top finish no wringing.

Non-magnetic, non glaring, economical, lesser wear, no oiling, no rust.

Supplied with Regin Cover, bigger sizes on request.



| Cat. No. | Size | Flatness Tolerance in μm | |
|----------|-------------------|-------------------------------------|-----------|
| | mm | Grade - 0 | Grade - 1 |
| MMT-4442 | 250 x 250 x 50 | 3.5 | 7 |
| MMT-4443 | 400 x 250 x 50 | 4 | 8 |
| MMT-4444 | 400 x 400 x 60 | 4.5 | 9 |
| MMT-4445 | 630 x 400 x 80 | 5 | 10 |
| MMT-4446 | 630 x 630 x 80 | 5 | 10 |
| MMT-4447 | 1000 x 630 x 80 | 6 | 12 |
| MMT-4448 | 1000 x 1000 x 150 | 7 | 14 |
| MMT-4449 | 1600 x 1000 x 200 | 8 | 16 |
| MMT-4450 | 2000 x 1000 x 250 | 9.5 | 19 |



Cast Iron Surface Plate

Manufactured from high quality close grained cast-iron, heat treated for stress relief, stability & wear resistance.

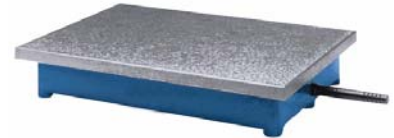
Precisely finished by planing & hand scraping which results in providing the reference plane for work layout & work inspection purposes like checking angles & parallelism.

Strongly webbed with solid face.

Furnished with lifting handles.

Accurately machined on tops, sides & ends.

Supplied with Rexin Cover, bigger sizes on request.



| Cat. No. | Size | Flatness Tolerance in μm | |
|----------|------------------------|-------------------------------------|-----------|
| | | Grade - 0 | Grade - 1 |
| MMT-4459 | 160 x 100 | 3 | 6 |
| MMT-4460 | 250 x 160 | 3.5 | 7 |
| MMT-4461 | 250 x 250 | 3.5 | 7 |
| MMT-4462 | 400 x 250 | 4 | 8 |
| MMT-4463 | 400 x 400 | 4.5 | 9 |
| MMT-4464 | 630 x 400 | 5 | 10 |
| MMT-4465 | 630 x 630 | 5 | 10 |
| MMT-4466 | 1000 x 630 | 6 | 12 |
| MMT-4467 | 1000 x 1000 | 7 | 14 |
| MMT-4468 | 1600 x 1000 | 8 | 16 |
| MMT-4469 | 2000 x 1000 | 10 | 19 |
| MMT-4470 | 300 x 200 (12" x 8") | 3 | 6 |
| MMT-4471 | 300 x 300 (12" x 12") | 4 | 8 |
| MMT-4472 | 450 x 300 (18" x 12") | 4 | 8 |
| MMT-4473 | 450 x 450 (18" x 18") | 4 | 8 |
| MMT-4474 | 600 x 450 (24" x 18") | 5 | 10 |
| MMT-4475 | 600 x 600 (24" x 24") | 5 | 10 |
| MMT-4476 | 900 x 600 (36" x 24") | 6 | 12 |
| MMT-4477 | 750 x 750 (30" x 30") | 6 | 12 |
| MMT-4478 | 900 x 900 (36" x 36") | 7 | 14 |
| MMT-4479 | 1200 x 900 (48" x 36") | 7 | 14 |
| MMT-4480 | 1500 x 900 (60" x 36") | 8 | 16 |



Engineer's Steel Scribers

These are made of carbon steel, properly heat treated & tempered.

Used for scribing layout lines on hardened steel, glass, wood , plastic surface etc.

For accurate marking out.

| Cat. No. | Description | Length | |
|----------|--|--------|-----------|
| | | Inch | mm |
| MMT-4485 | Double end scriber with knurled body. | 7-1/2 | 190 |
| MMT-4486 | Double ended scriber with three detachable points - One Straight 75mm & Two Bent 75mm and 150mm. | 9 & 12 | 225 & 300 |
| MMT-4487 | Double end scriber with twisted body for a firm grip. | 7 | 175 |
| MMT-4488 | Heavy duty double ended scriber with knurled body | 9 | 225 |
| MMT-4489 | Machinist's scriber - Light duty single ended scriber with knurled body. | 4-1/2 | 114 |
| MMT-4490 | Handy scriber - A double ended scriber which is pointed at one end & has a knife edge at the opposite end. | 7 | 175 |

